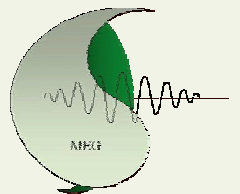
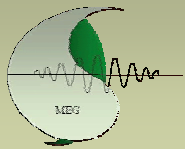


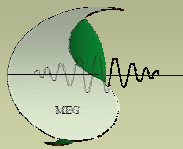
# Data Management and Processing





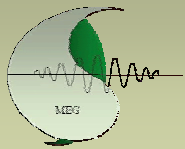
# Agenda

- Introduction
- Data Management and Processing System
- Database Structure

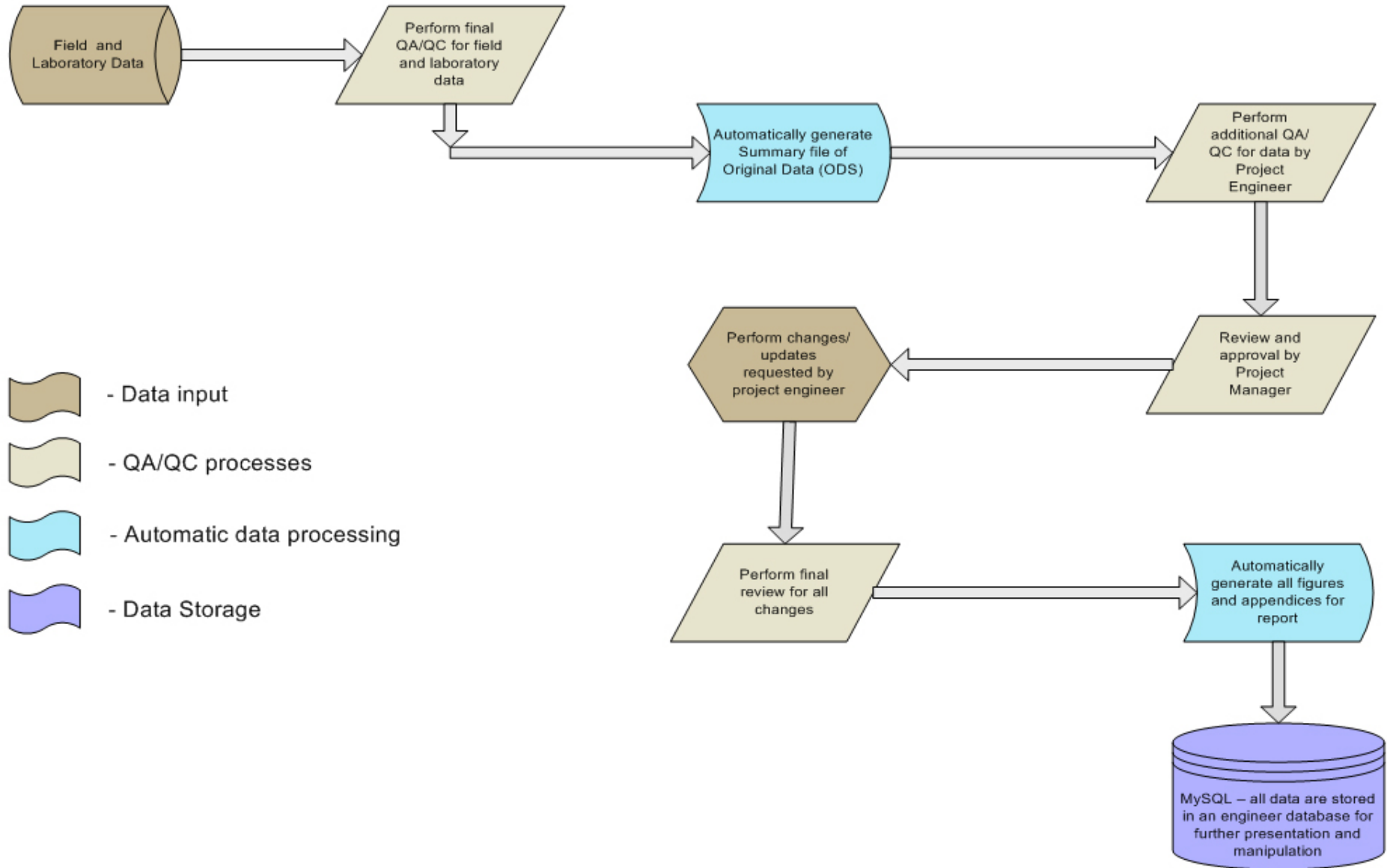


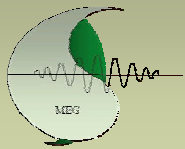
# Introduction

- MEG Consulting has developed an effective data management system to satisfy clients requirements such as accuracy, consistency and time efficiency.
- Data Management and Processing team is responsible for quality assurance/quality control, processing and storage of all field and laboratory data.
- All processing cycles are done both manually (QA/QC process) and automatically (generating data into files and database). Automatic processing is done by using specific in-house programs designed and developed by MEG personnel.
- MEG Consulting has implemented database system to satisfy clients and MEG engineers needs.
- Data Management set up optimizes data preparation for analysis, reduces repetitive activities and streamlines report preparation.



# Data Management System

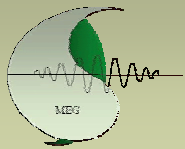




# Database

MEG Consulting can provide services for the development of relational database specific to a client or project needs:

- Easy, quick and reliable data access at any time from any location.
- Organized browsing, retrieval and comparison of data.
- Preliminary geotechnical assessment of new sites by analyzing existing locations.
- Centralized storage of all project information including results.
- Highly secure data access as determined by client.
- Database expandable to geotechnical projects at other locations.
- Database can incorporate other GIS (Geographical Information System) related features as required by client.



# Database System

